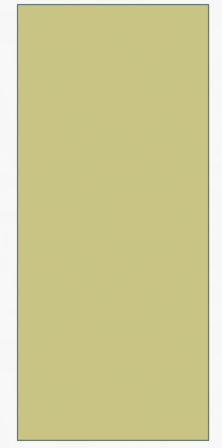
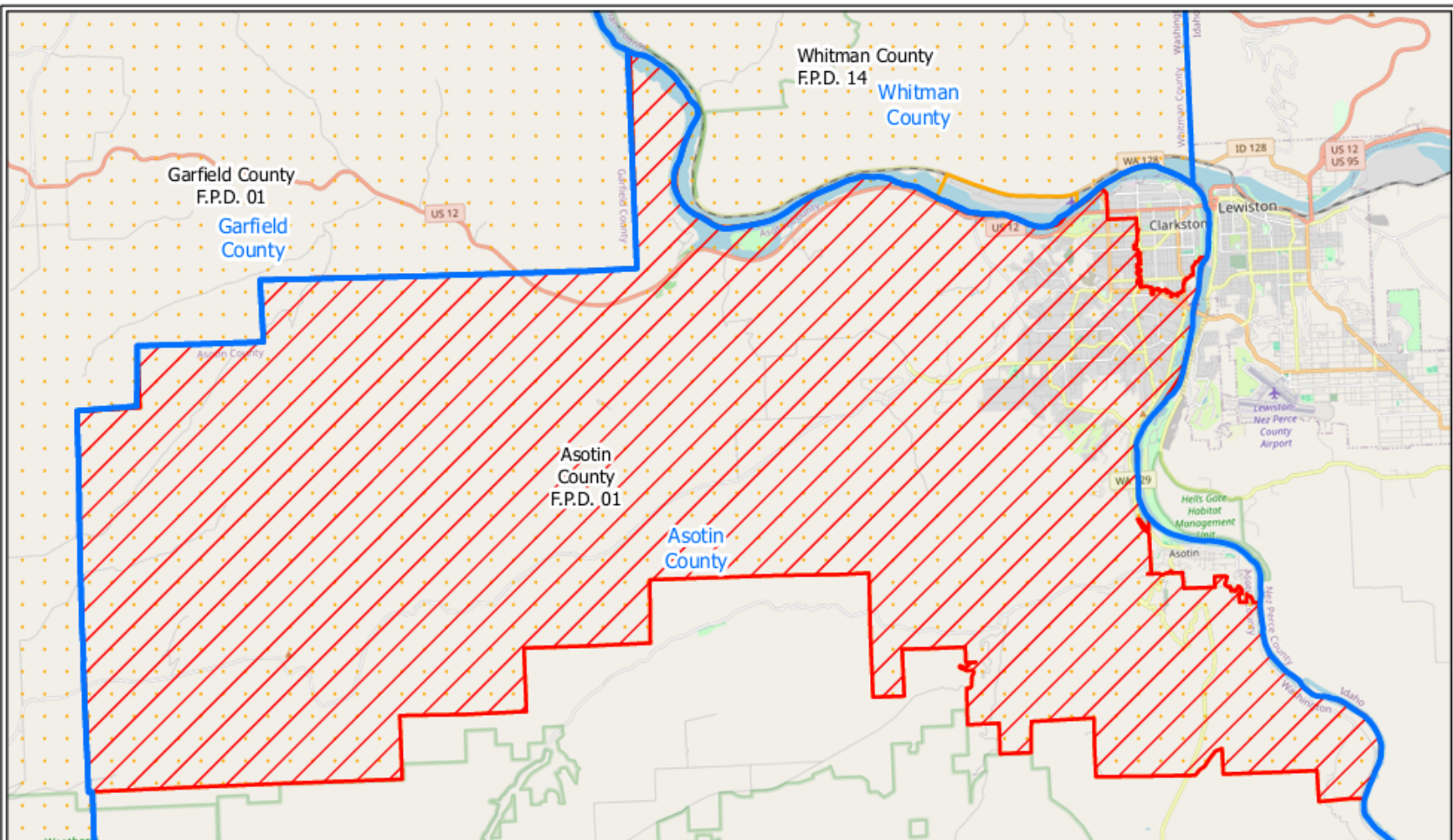







# CLARKSTON FIRE DEPARTMENT

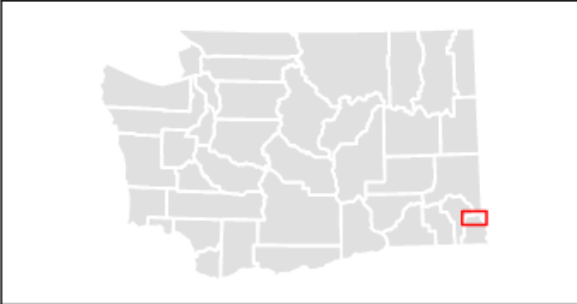
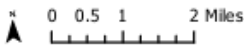
EMERGENCY MEDICAL SERVICES LEVY





**(Unincorporated Portion Only)**

-  County
-  Fire Protection District
-  Selected Fire Protection District

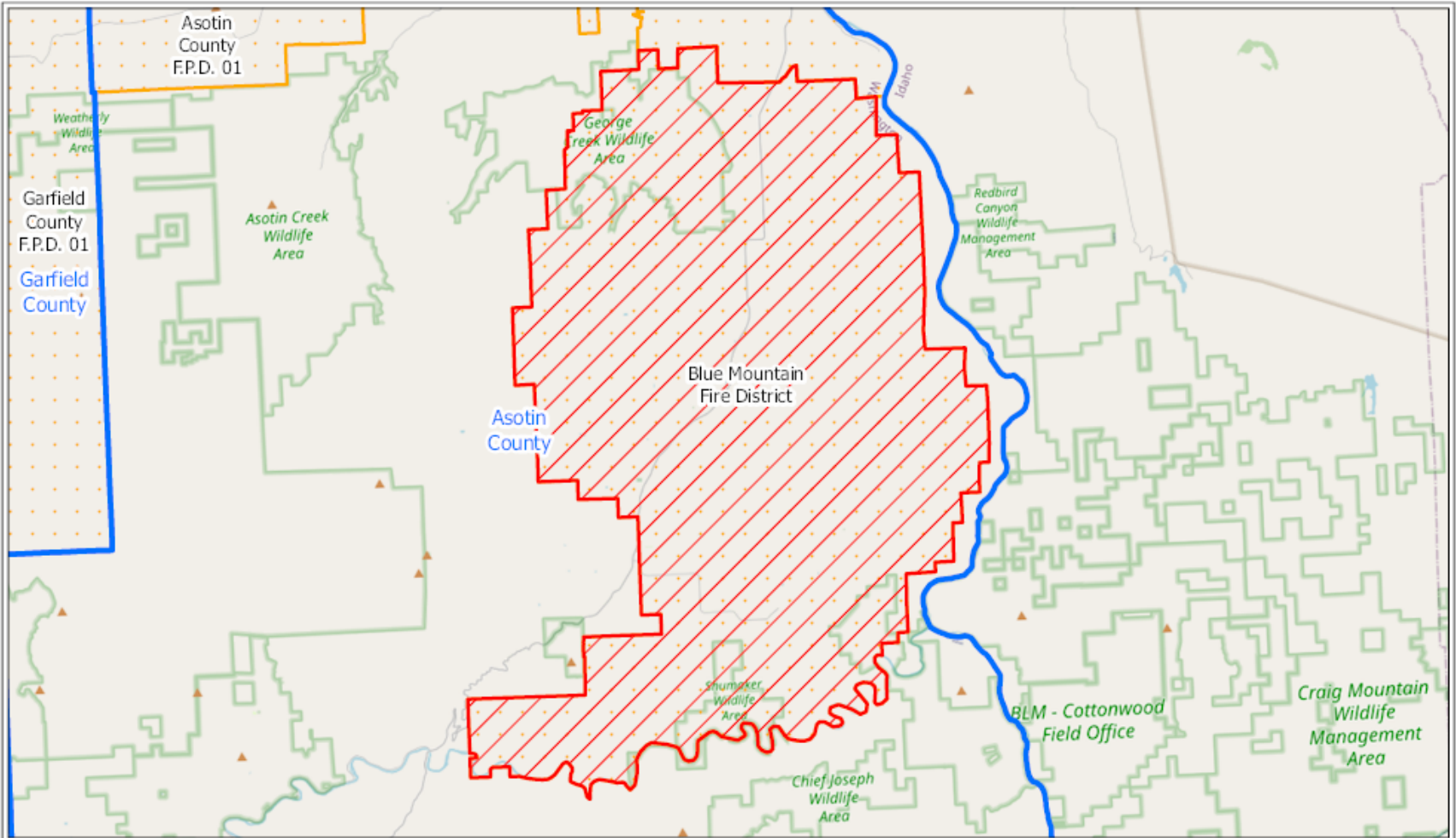


Washington State  
Office of Financial Management  
Forecasting & Research Division


Disclaimer: By using these data, the user agrees that neither the Office of Financial Management nor the Washington Surveying and Rating Bureau shall be liable for any activity involving these data with regard to lost profits or savings or any other consequential damages; or the fitness for use of the data for a particular purpose; or the installation of the data, its use, or the results obtained.

Data source: Fire Protection Districts and City Limits [Shapefile], Washington Surveying and Rating Bureau, October 1, 2024.

Map prepared by OFM on October 1, 2024.



**(Unincorporated Portion Only)**

-  County
-  Fire Protection District
-  Selected Fire Protection District



Washington State  
Office of Financial Management  
Forecasting & Research Division

Disclaimer: By using these data, the user agrees that neither the Office of Financial Management nor the Washington Surveying and Rating Bureau shall be liable for any activity involving these data with regard to lost profits or savings or any other consequential damages, or the fitness for use of the data for a particular purpose; or the installation of the data, its use, or the results obtained.

Data source: Fire Protection Districts and City Limits (Shapefile), Washington Surveying and Rating Bureau, October 1, 2024.

Map prepared by OFM on October 1, 2024.



CITY OF CLARKSTON

# WHAT HAPPENS WHEN YOU CALL 911?

- Your City of Clarkston EMS team responds to:
  - Heart Attacks
  - Strokes
  - Falls
  - Lift Assists
  - Serious Injuries
  - Breathing Emergencies
  - Vehicle Collisions
  - Life-Threatening Medical Events

Emergency Care begins the moment our paramedics arrive.

# 49 YEARS OF SERVICE TO THE CITY OF CLARKSTON

- APRIL 12<sup>TH</sup>, 1976 – ESTABLISHED QRU AMBULANCE SERVICE TO SERVICE THE CITY AND SURROUNDING RURAL AREA.
- RESCUE ONE EMS LEVY - SEPTEMBER 1978
- MARCH 24<sup>TH</sup>, 1997 – CITY NOT ADEQUATLY SERVED BY EXISTING PRIVATE AMBULANCE AND MOVED TO ESTABLISHED SERVICE CONTRACT WITH CITY OF LEWISTON FOR AMBULANCE TRANSPORT SERVICES.
- SEPTEMBER 16<sup>TH</sup>, 2009 – ESTABLISHED EXCLUSIVE SYSTEM OF AMBULANCE SERVICE PROVIDED BY CLARKSTON FIRE DEPARTMENT.

# MOBILE INTEGRATED HEALTH

- FEBRUARY 1<sup>ST</sup>, 2023 – INTRODUCED A COMMUNITY PARAMEDIC (CP) PROGRAM WITH FUNDING PROVIDED BY AN AGREEMENT WITH GREATER HEALTH NOW AND AWC.
- This program is meant to increase access to primary and preventive care and decrease use of emergency departments, and the 911 system that is placed on them by excessive calls for resources. Among other things, the CP plays a key role in providing follow-up services after a hospital discharge to prevent hospital readmission.

# YOUR LOCAL EMS SYSTEM

- Serving approximately **7300 residents**

Providing:

- 24/7 Emergency Medical Response
- Ambulance Transport
- Advanced Life Support Paramedic Care
- Community Paramedicine Services
- Emergency Preparedness and Disaster Response

# WHAT THE LEVY FUNDS

## People

- Paramedics
- EMTs

## Services

- Emergency Response
- Patient Transport

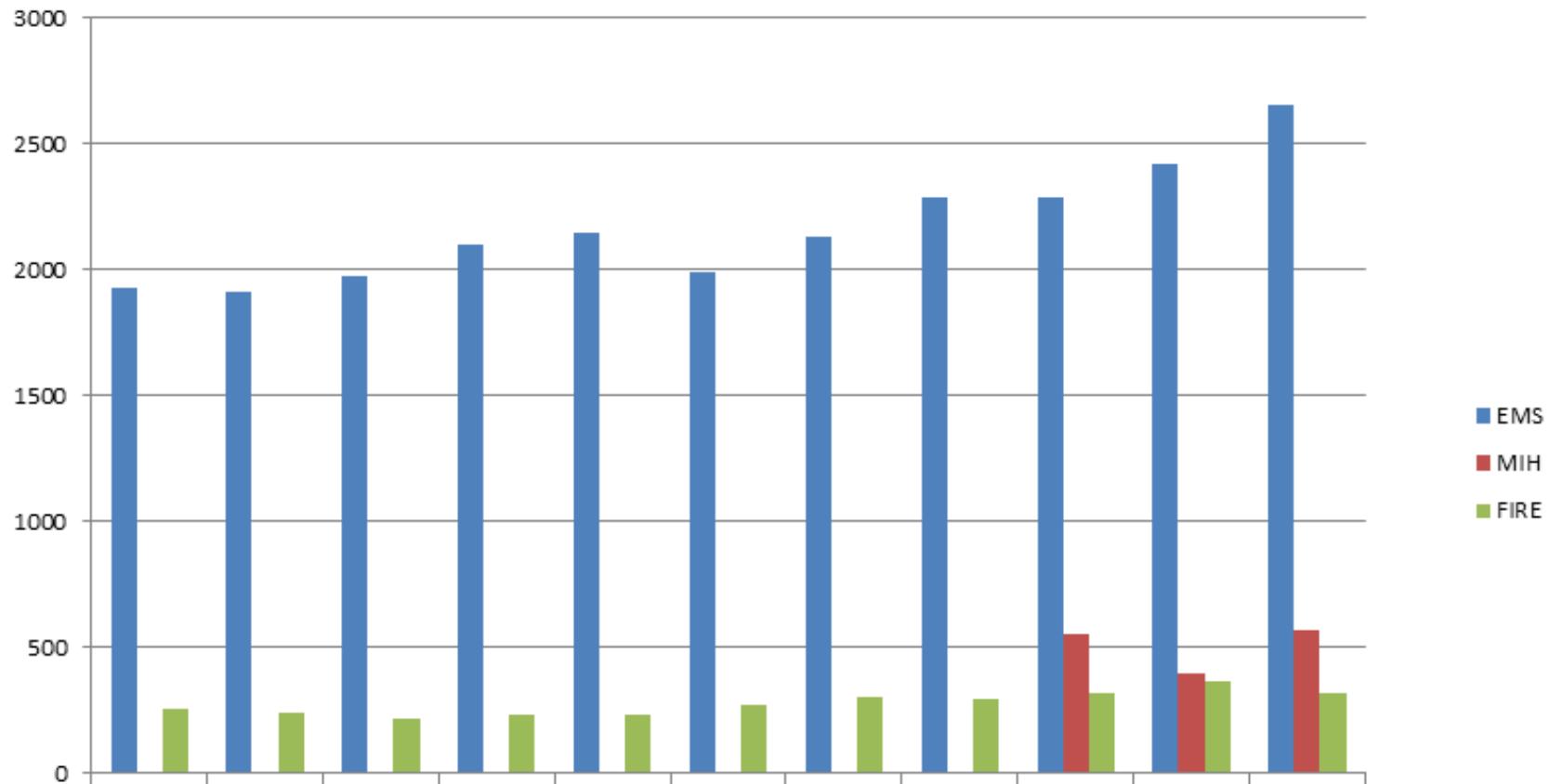
## Equipment

- Ambulances
- Cardiac Monitors
- Life-Saving Medications
- Medical Supplies

# ABOUT THE DEPARTMENT

- Combination Fire and EMS service staffed with career, reserve and volunteers protecting approx. 7300 residents in a 2.2 square mile coverage area.
- 1- Fire Chief
- 1 – Administrative Assistant
- -13 Career Staff
  - 9 paramedics, 3 EMTs, 1 Community Paramedic
- - 6 Reserve Firefighters
  - 1 firefighter/paramedics, 4 firefighter/EMTs
- - 5 Volunteer Firefighters

# 10 YEAR CALL VOLUME HISTORY



	2015	2016	2017	2018	2019	2020	2021	2022	2023	2024	2025
EMS	1922	1913	1969	2098	2147	1992	2129	2285	2283	2415	2652
MIH									550	393	569
FIRE	252	235	213	232	228	270	300	289	313	361	319

# CLARKSTON VS. SURROUNDING DEPARTMENTS

THE CITY OF CLARKSTON HAS A SIGNIFICANTLY SMALLER TAX BASE THAN NEIGHBORING DEPARTMENTS.

MAINTAINING AMBULANCE SERVICE REQUIRES A DEDICATED FUNDING SOURCE TO KEEP EMS AVAILABLE LOCALLY.

## 2026 TAXABLE VALUES

\$742,608,594 – CITY

\$1,704,803,519 – ACFD#1

## LEVY RATES

2025 1.48/\$1000 ASSESSED VALUE

2026 0.00 LEVY DID NOT PASS

2027 1.64/\$1000 ASSESSED VALUE

## WHAT THIS MEANS

2025 \$250,000 HOME PAID \$370 YEAR

2027 \$250,000 HOME PAID \$410 YEAR

# WHY LOCAL EMS MATTERS

## FASTER ACCESS TO CARE

- MEDICAL EMERGENCIES CANNOT WAIT.

## LOCAL ACCOUNTABILITY

- YOUR EMS SYSTEM IS GOVERNED BY YOU.

## COMMUNITY FOCUS

- THE PEOPLE SERVING YOU ARE PART OF THE COMMUNITY.

## RELIABILITY

- AMBULANCES REMAIN AVAILABLE 24/7 WHEN RESIDENTS NEED THEM MOST.

# WHAT YOUR VOTE DECIDES

THIS MEASURE DETERMINES WHETHER THE CITY OF CLARKSTON CONTINUES FUNDING A LOCAL AMBULANCE TRANSPORT SYSTEM

A "YES" VOTE SUPPORTS CONTINUED LOCAL EMS OPERATIONS

A "NO" MEANS THE CITY MUST EVALUATE OTHER OPTIONS FOR PROVIDING AMBULANCE TRANSPORT SERVICES INCLUDING DISCONTINUATION OF EMS SERVICES

# IF THE LEVY DOES NOT PASS

- IF “YOU” THE VOTERS DECIDE THE LEVY IS TOO EXPENSIVE AND VOTE IT DOWN, THERE IS NO MORE EMS TRANSPORT IN CLARKSTON.
- CURRENT SERVICE MODEL WILL NOT STOP UNTIL EARLY 2027.
- THE CITY HAS USED ITS GENERAL FUND FOR 2026 AND IS NOT GOING TO DO THE SAME IN THE FUTURE.
- ALTERNATIVE SERVICE DELIVERY MODELS MAY BE CONSIDERED BUT ONLY IF FUNDING IS AVAILABLE.
- THE ONLY FUNDING OPTION IS THE EMS LEVY WITHOUT IT, THE CITY CANNOT CONSIDER OUTSIDE OPTIONS.

THIS IS A DECISION ABOUT HOW EMERGENCY MEDICAL SERVICES ARE FUNDED IN THE FUTURE.

# INVESTING IN PUBLIC SAFETY

EMERGENCY MEDICAL SERVICES ARE OFTEN THE FIRST POINT OF CONTACT DURING A CRISIS.

THE LEVY HELPS ENSURE:

- ✓ AMBULANCES ARE AVAILABLE
- ✓ PARAMEDICS ARE TRAINED AND EQUIPPED
- ✓ EMERGENCY CARE REMAINS LOCAL
- ✓ RESIDENTS CONTINUE RECEIVING TIMELY MEDICAL ASSISTANCE

# YOUR VOTE MATTERS

- FOR NEARLY 50 YEARS, CLARKSTON RESIDENTS HAVE SUPPORTED LOCAL EMERGENCY MEDICAL SERVICES.
- YOUR VOTE WILL DECIDE THE FUTURE OF EMS IN OUR COMMUNITY
- THANK YOU FOR YOUR CONTINUED SUPPORT, IT HAS BEEN OUR PLEASURE SERVING YOU.